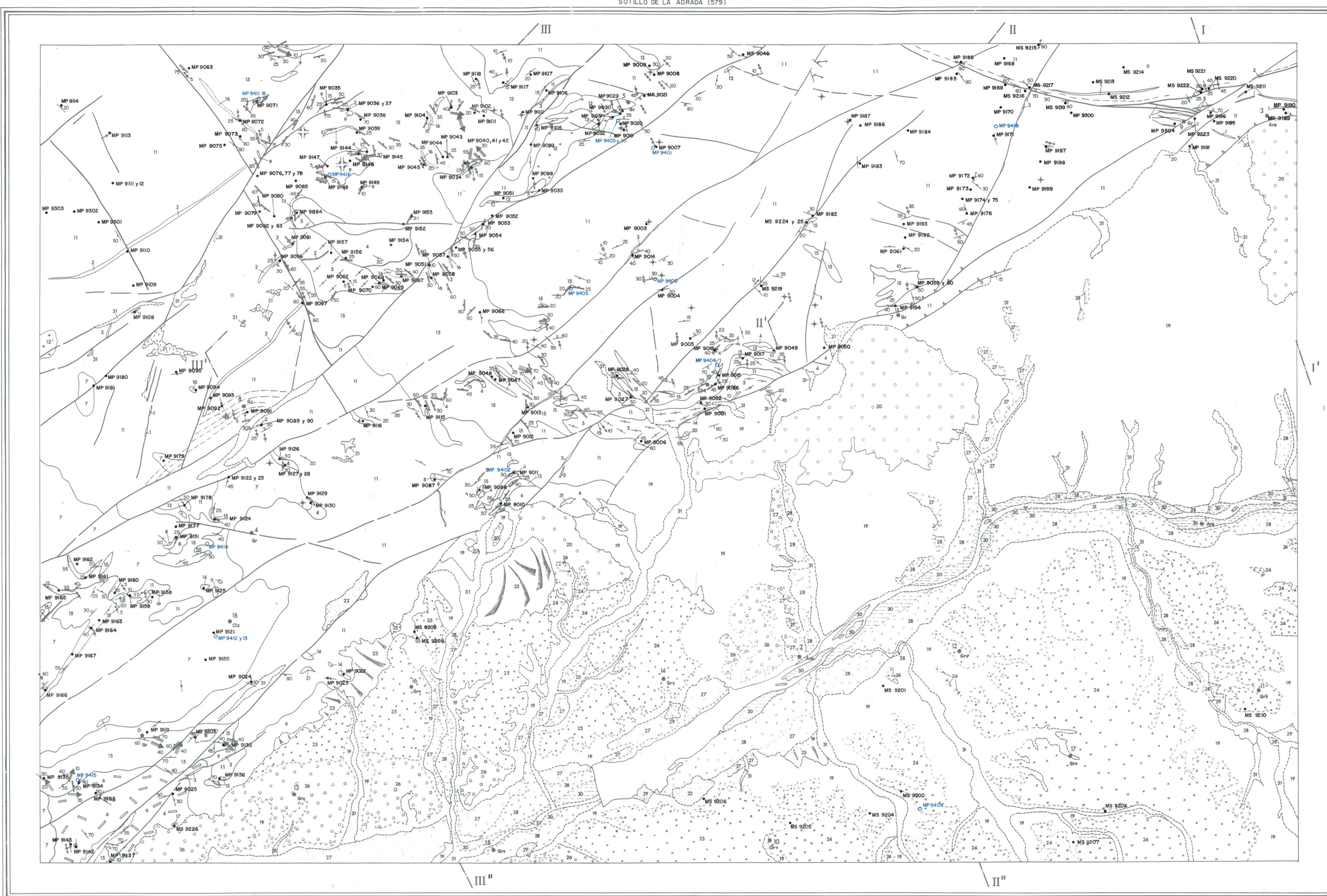


LEYENDA

Geological legend table with columns for geological units (e.g., Holocene, Pleistocene, Miocene) and their corresponding symbols and descriptions.

SIGNOS CONVENCIONALES

Conventional symbols legend table listing various geological features like contacts, faults, and folds with their respective symbols.

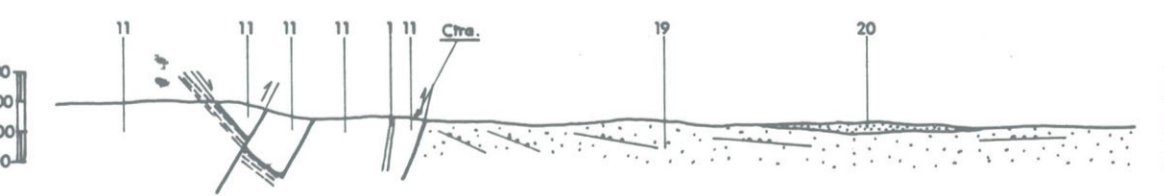


MARTIN PARRA, L.M. (M.P.)  
MARTINEZ-SALANOVA, J. (M.S.)

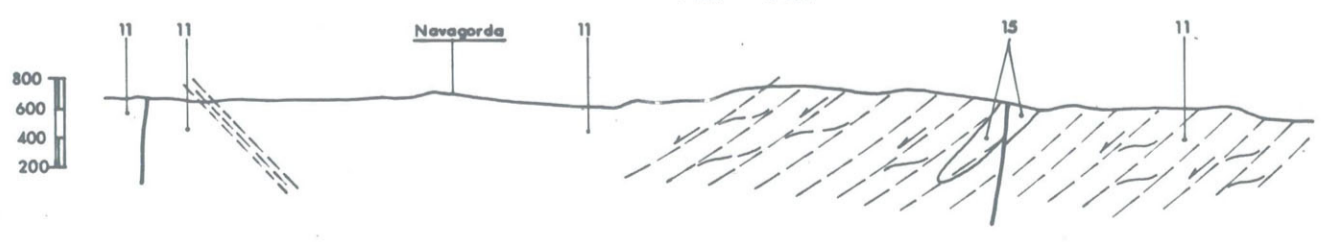
NORMAS, DIRECCION Y SUPERVISION: I.T.G.E. MADRID 1993  
CONSULTOR: E. N. ADARO  
AUTORES: MARTIN PARRA, L.M. (E.GEO s.c.)  
MARTINEZ-SALANOVA, J. (E.GEO s.c.)  
MARQUEZ CALVO, L.A. (E.N. ADARO)  
DIRECCION Y SUPERVISION I.T.G.E.  
BELLIDO MULAS, F.



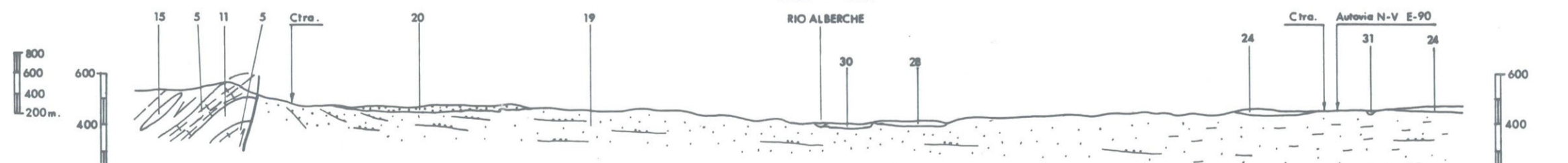
CORTE I - I' N.NO. - S.SE.



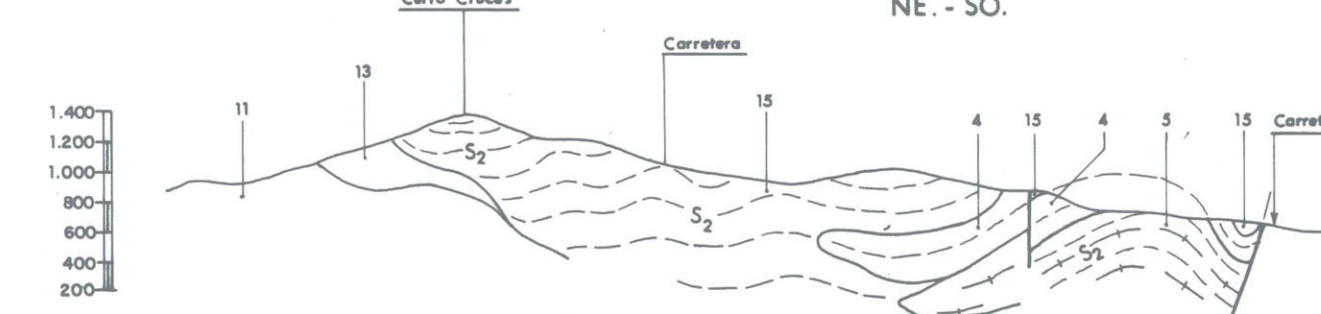
CORTE II - II' NE. - SO.



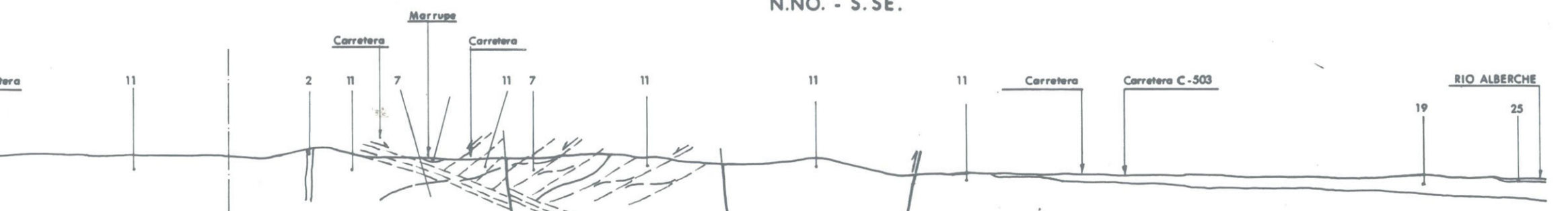
CORTE II' - II'' NO. - SE.



CORTE III - III' NE. - SO.



CORTE III' - III'' N.NO. - S.SE.



COLUMNAS DE LAS PRINCIPALES UNIDADES O ZONAS

